
Life After Stroke

Stroke Recovery

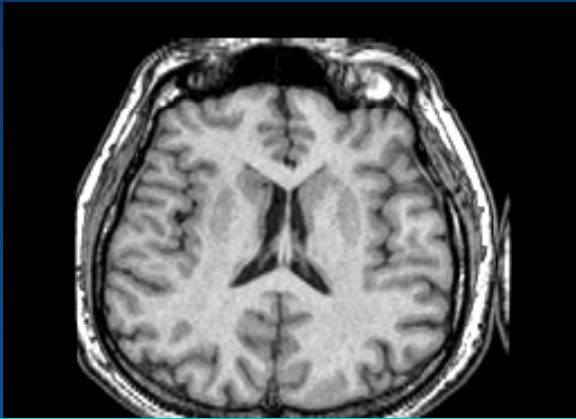
- Recovery is not only physical, but mental and emotional as well
- Neuropsychological Testing for cognitive memory, behavioral & emotional problems after stroke
- Therapy
 - Speech Therapy
 - Physical Therapy
 - Occupational Therapy
 - Cognitive Therapy



Stroke Recovery

- Take Medications as prescribed
- Lifestyle Modification
- Follow Up with health care provider
- Join “Life After Stroke” Support Group

Why Neuropsychological Testing



MRI: Normal Brain

- After a stroke patients can experience changes in behavior, memory, language, depression, moods, as a result of changes in the brain
- A neuropsychological evaluation helps patients and treating physicians determine the changes that have occurred in these areas and what next steps should be taken to help the patient.

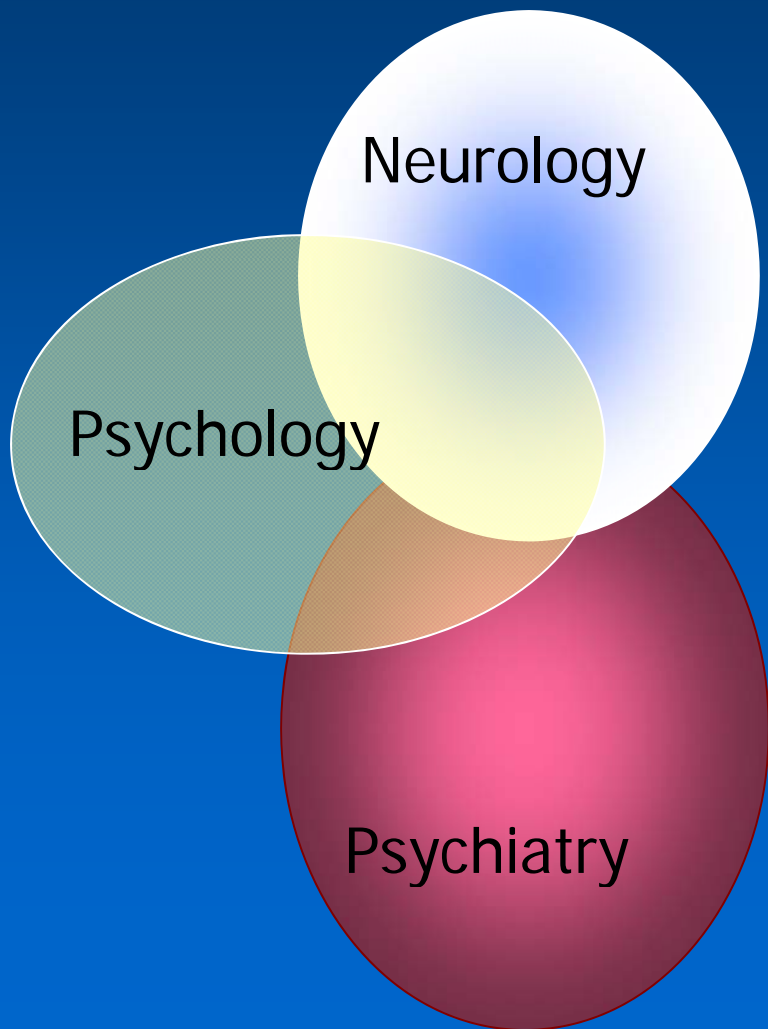


MRI: Brain with Stroke

Neuropsychology

- Neuropsychology is a clinical specialty concerned with the cognitive, behavioral, and emotional problems that arise from known or suspected brain damage or dysfunction
- Neuropsychologists use objective, norm-referenced tools to assess the functional capabilities of patients

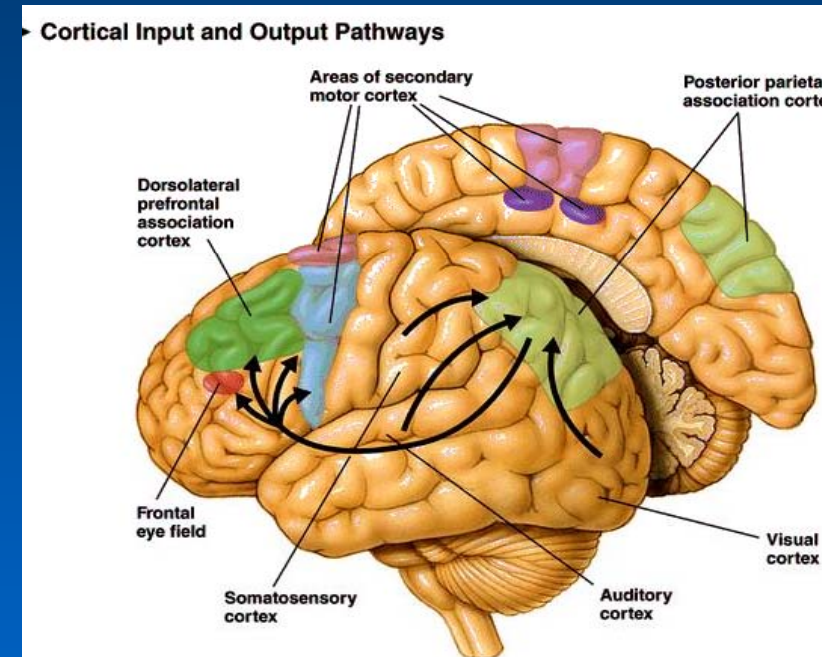
A Multidisciplinary Perspective



- Neuropsychology comprises the intersection of clinical neurology, psychiatry and psychology.
- Clinical neuropsychology involves the assessment of cognitive, behavioral and psychopathological consequences of brain disease (eg, stroke)
- Is helpful in addressing questions such as:
 - What is the nature & severity of the patient's cognitive problems?
 - What is their level of insight and problem-solving abilities?
 - How do personality changes impact on their ability to interact socially?
 - Can this patient live independently and manage medications safely?
 - Can the patient go back to work?
 - Can the patient drive?
 - What kind assistance does the patient need ?

Benefits of Neuropsychological Assessment

- With information about cognitive and functional strengths & weaknesses, we are better able to recommend effective strategies to assist patients compensate for stroke-related deficits.
- Findings provide objective evidence
 - to document the nature & severity of stroke-related cognitive, language and functional deficits;
 - to help target rehabilitative therapies;
 - to document recovery over time and support recommendations for work or school program accommodations;
 - to determine if a patient understands recommendations and can make truly informed medical decisions;
 - of functional independence with decision-making, effective problem solving, driving, managing personal finances etc.



The Neuropsychological Test Battery

Standardized, Valid, Reliable, & Domain-Specific Tests

- *General intellectual abilities*
 - *Premorbid intelligence estimate*
 - *Current psychometric intelligence*
- *Sensory-motor Functions*
- *Attention and Concentration*
- *Executive Functions*
- *Language*
- *Visual-spatial Abilities*
- *Learning and Memory*
- *Personality/ Emotional Factors*

Neuropsychological Evaluation

- Comprehensive diagnostic interview
- 1-7 hours of testing
 - individually tailored
- Standardized, valid and reliable tests
- Objectively scored
- Comparison to established & appropriate norms
- Qualitative interpretation
 - *How* the patient completes tests
 - As important as level of performance